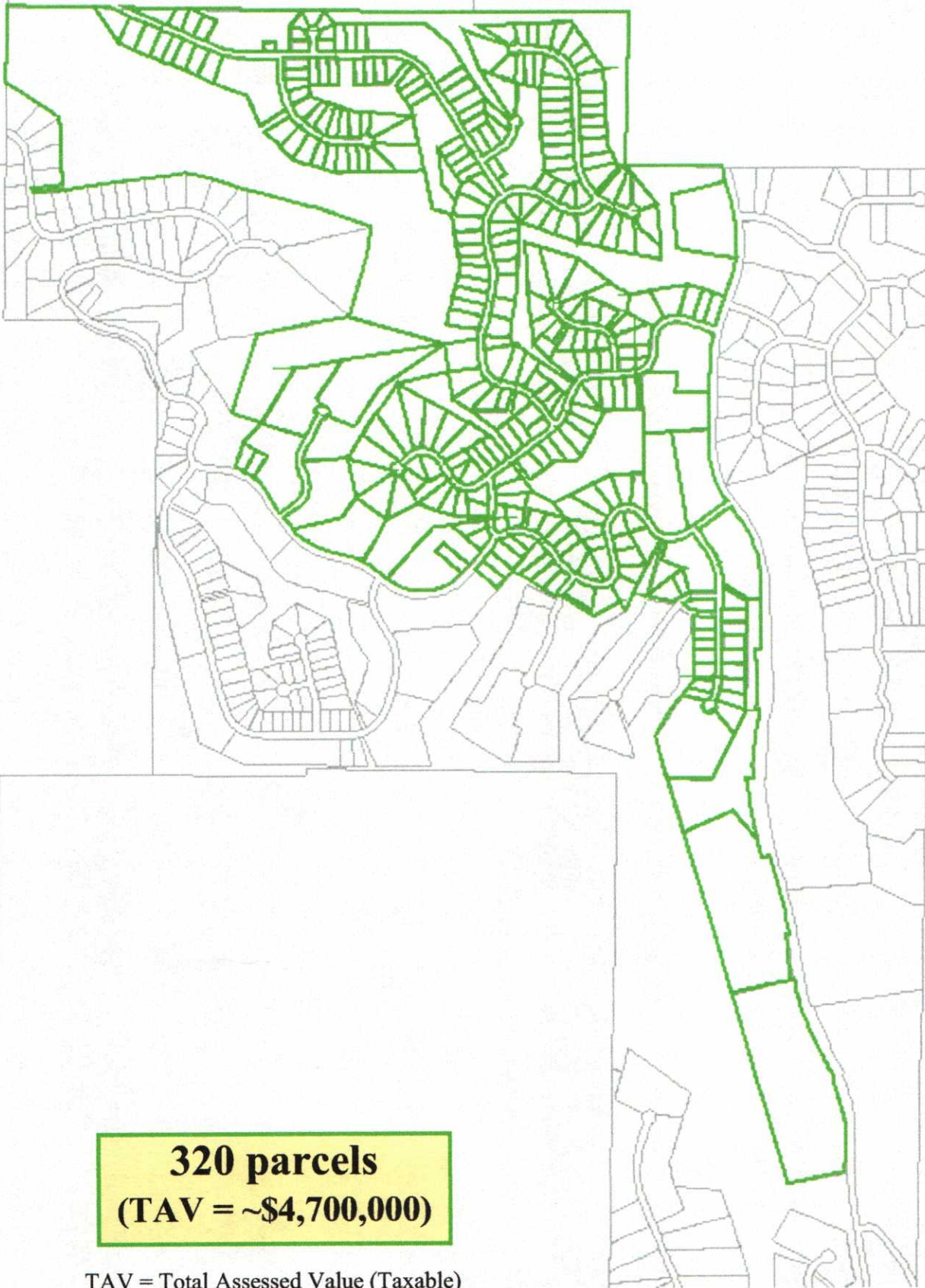


**Filing 1 parcels
(in green)**

**93 parcels
(TAV = ~\$1,630,000)**

TAV = Total Assessed Value (Taxable)

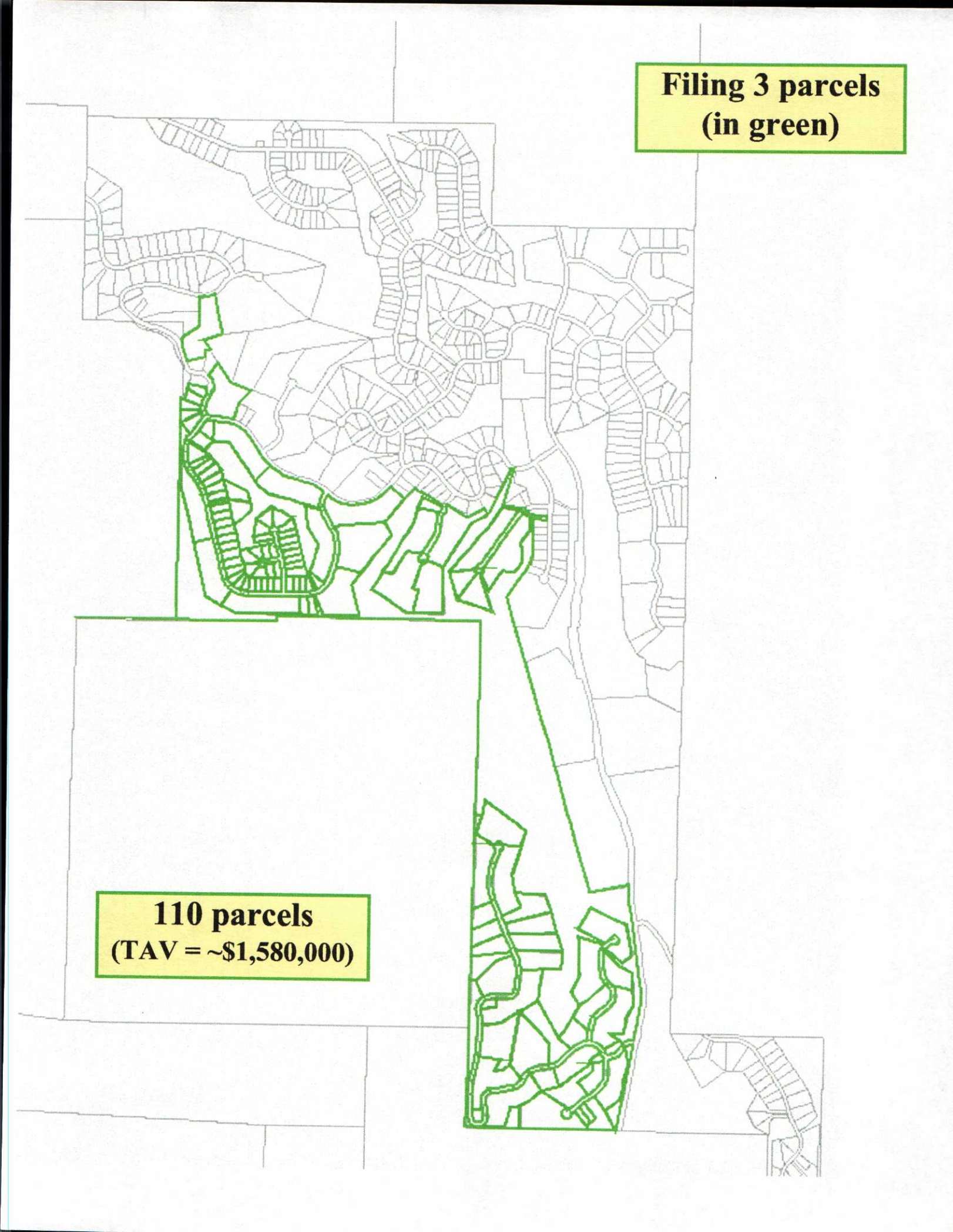
**Filing 2 parcels
(in green)**



**320 parcels
(TAV = ~\$4,700,000)**

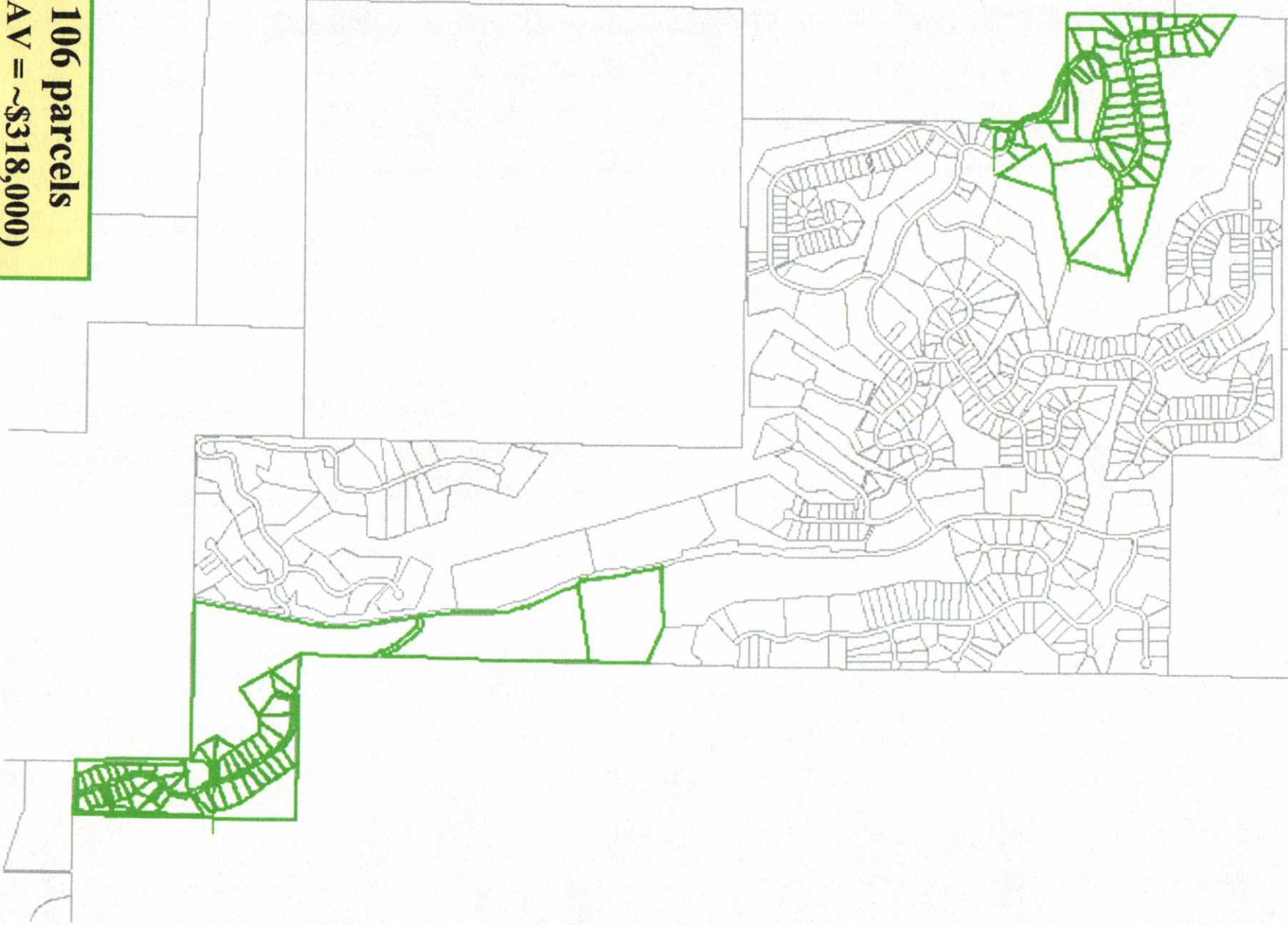
TAV = Total Assessed Value (Taxable)

**Filing 3 parcels
(in green)**



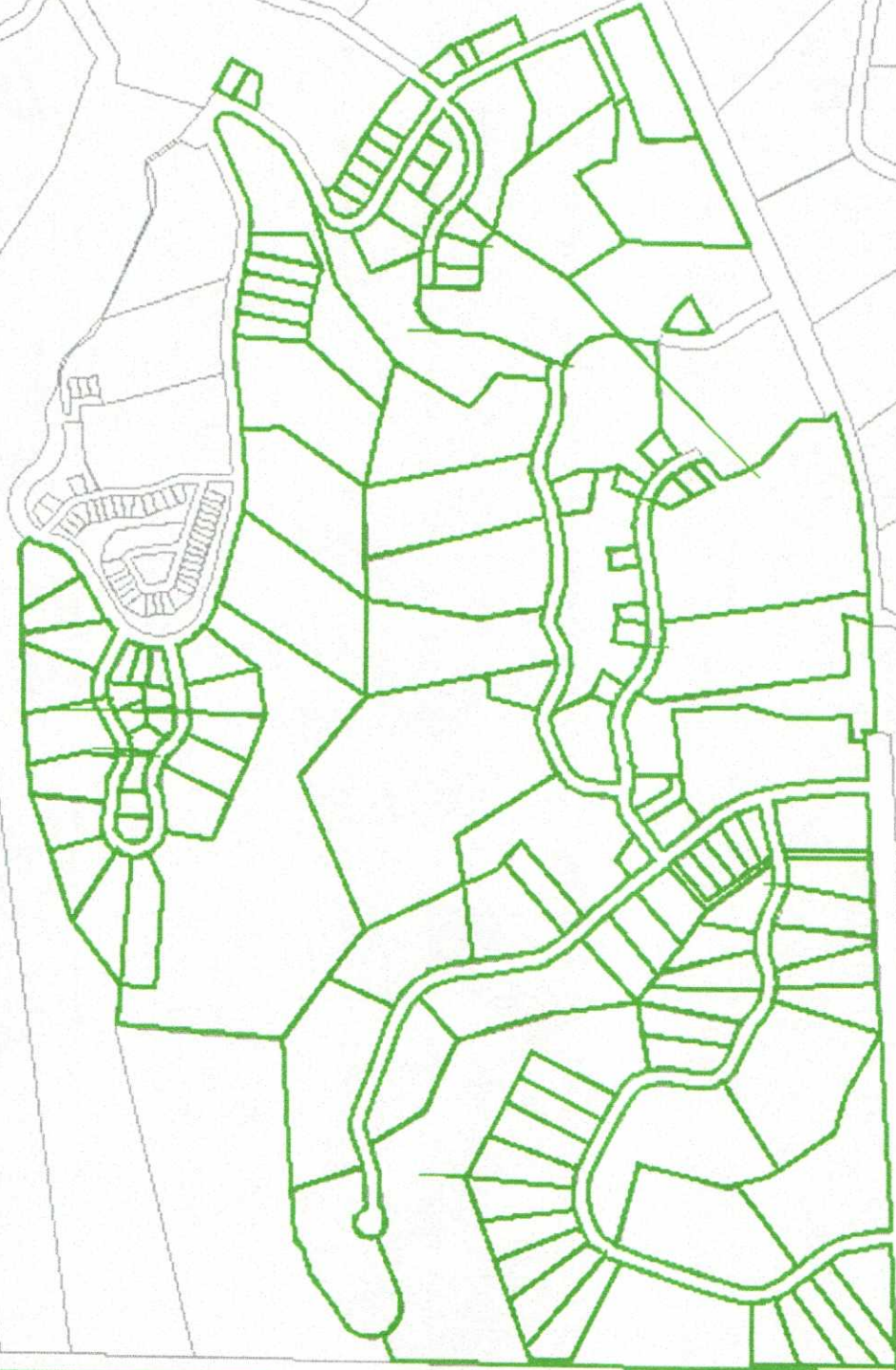
**110 parcels
(TAV = ~\$1,580,000)**

**Filing 4 parcels
(in green)**



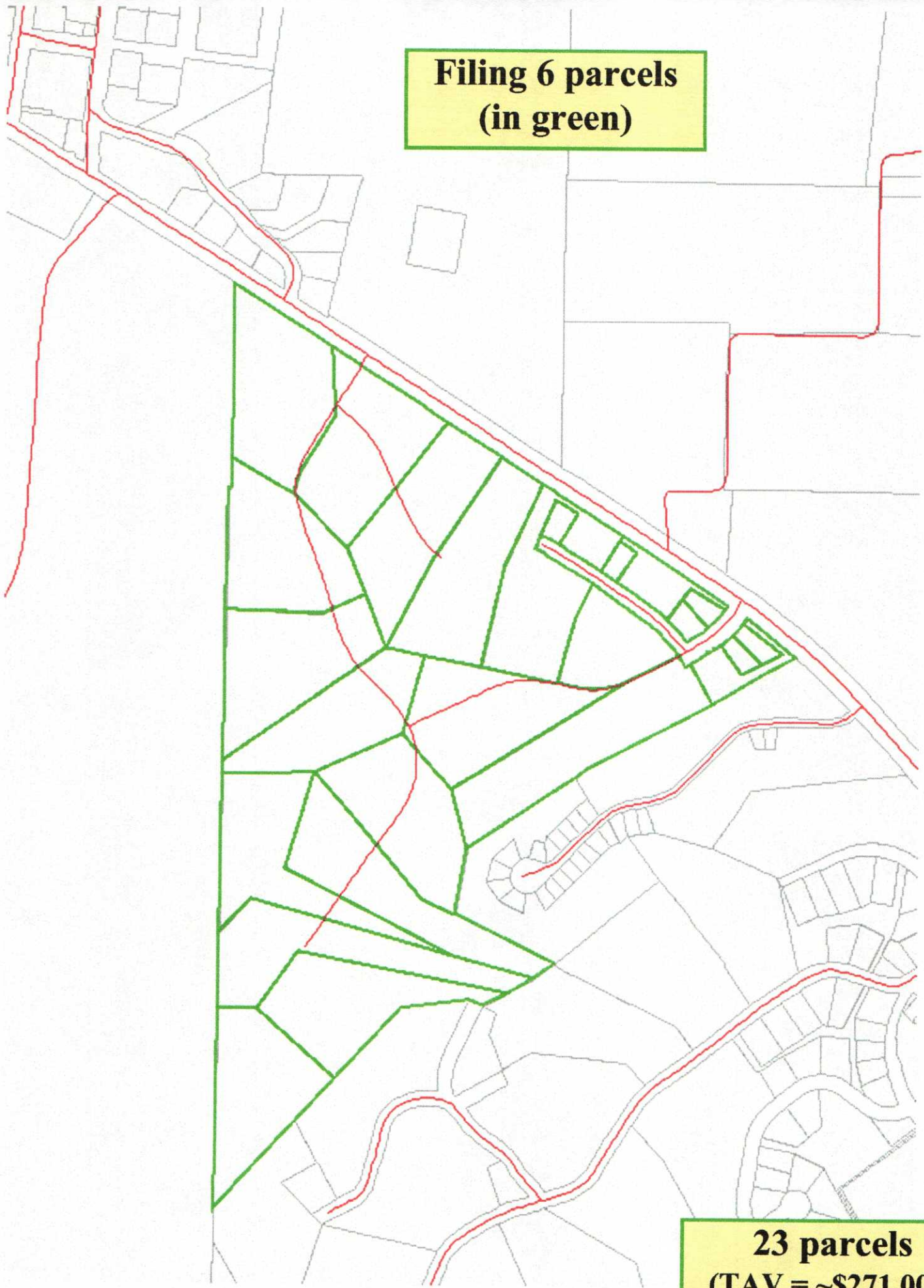
**106 parcels
(TAV = ~\$318,000)**

**Filing 5 parcels
(in green)**

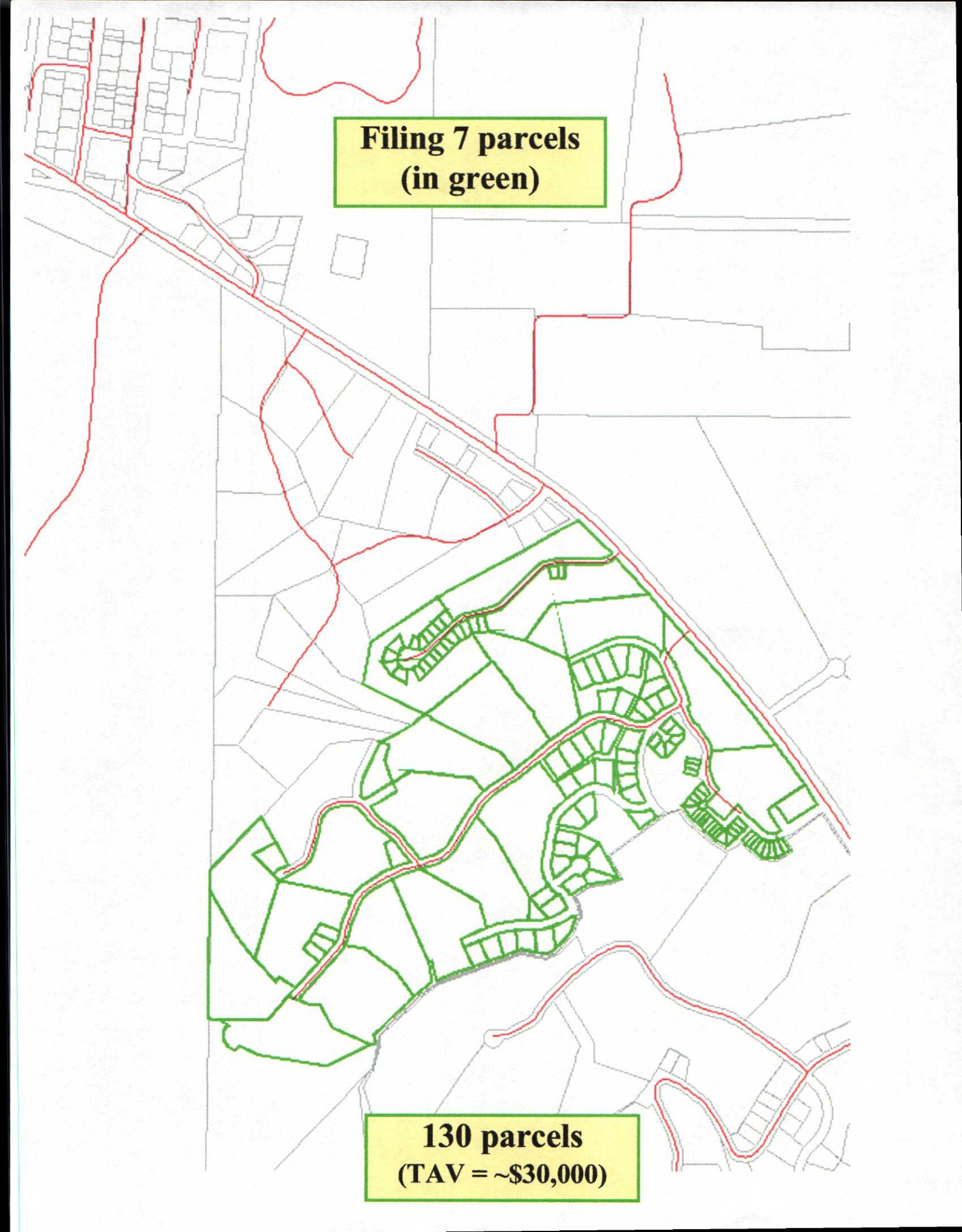


**131 parcels
(TAV = ~\$658,000)**

**Filing 6 parcels
(in green)**



**23 parcels
(TAV = ~\$271,000)**



**Filing 7 parcels
(in green)**

**130 parcels
(TAV = ~\$30,000)**

**Filing 8 parcels
(in green)**

**50 parcels
(TAV = ~\$9,400)**

TAV = Total Assessed Value (Taxable)